

SUPERFICIE ÚTIL CERRADA

RECIBIDOR	7,25 m ²
COCINA	9,10 m ²
SALÓN COMEDOR	21,30 m ²
DISTRIBUIDOR	1,85 m ²
BAÑO 1	4,20 m ²
BAÑO 2	3,70 m ²
DORMITORIO 1	16,15 m ²
DORMITORIO 2	10,00 m ²
DORMITORIO 3	10,20 m ²

TOTAL S.CERRADA (A) 83,75 m²

SUPERFICIE ÚTIL ABIERTA

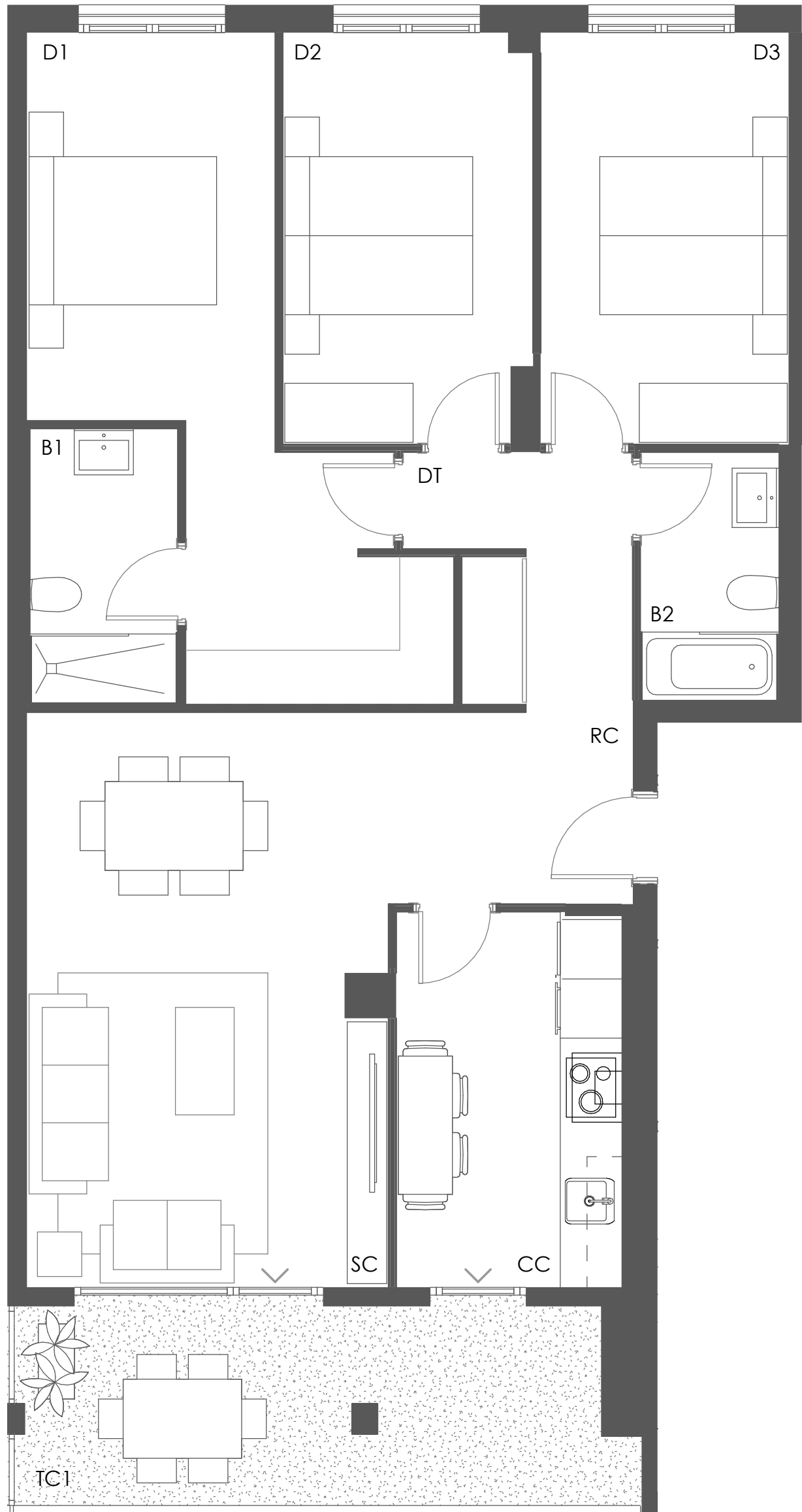
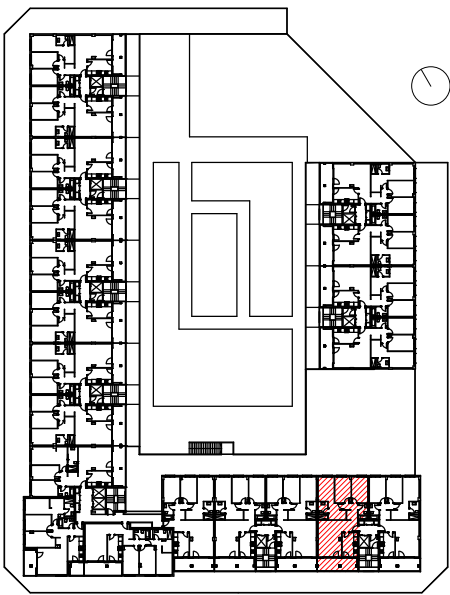
TERRAZA CUBIERTA 1	12,50 m ²
--------------------	----------------------

TOTAL S.ABIERTA (B) 12,50 m²

SUPERFICIE ÚTIL TOTAL

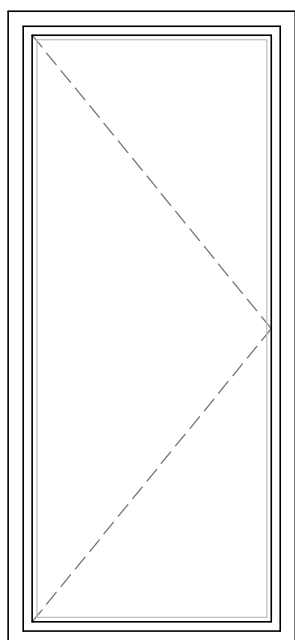
TOTAL (A+B) 96,25 m²

TOTAL VENTA VPA 90,00 m²

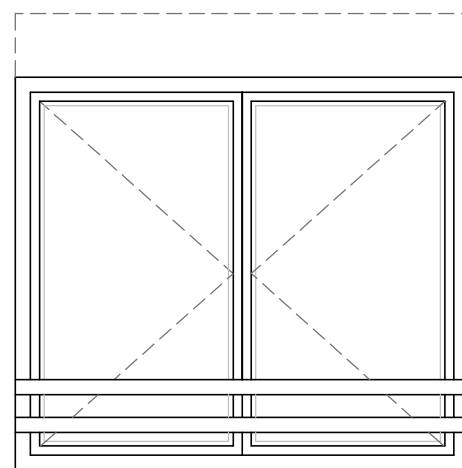


EDIFICIO AQUASUR

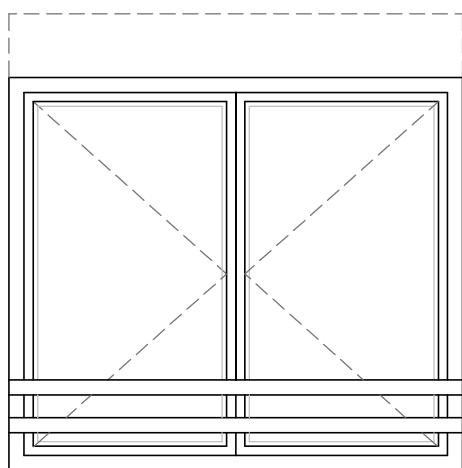
E07 2º B



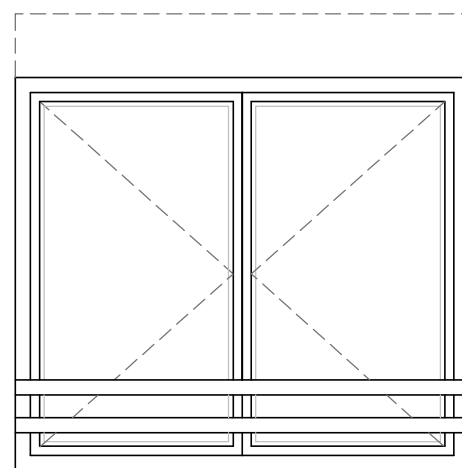
COCINA
ABATIBLE
SIN PERSIANA



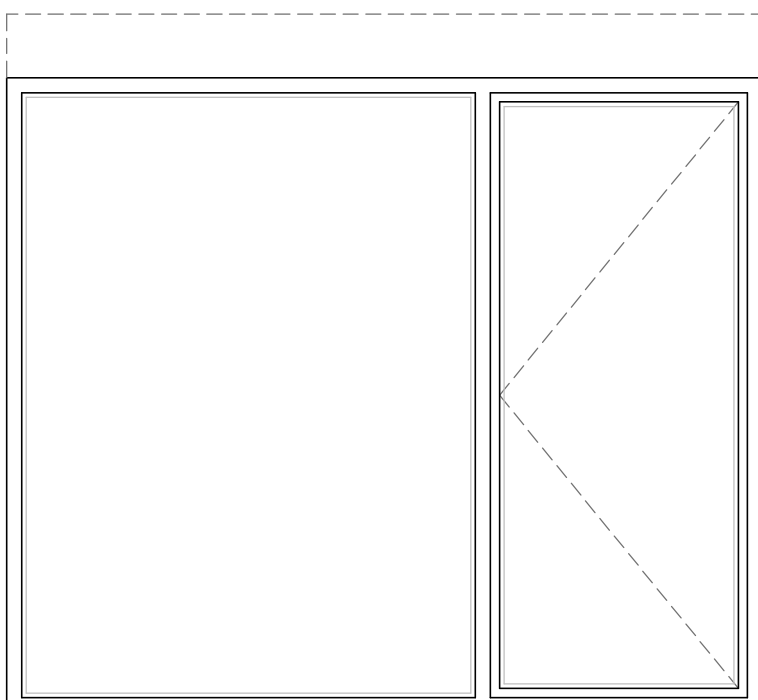
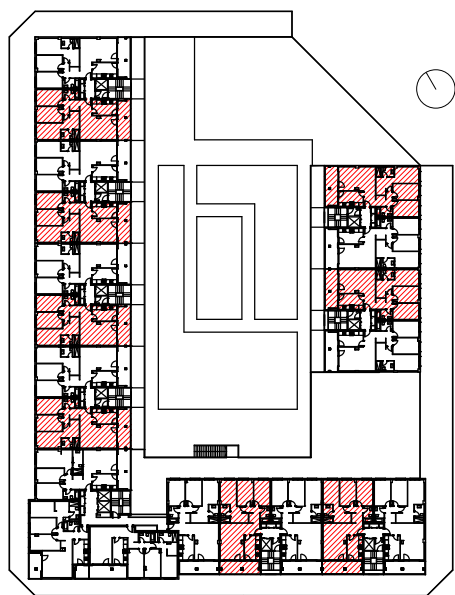
DORMITORIO 1
DOBLE ABATIBLE, CON QUITAMIEDOS
PERSIANA



DORMITORIO 2
DOBLE ABATIBLE, CON QUITAMIEDOS
PERSIANA



DORMITORIO 3
DOBLE ABATIBLE, CON QUITAMIEDOS
PERSIANA



SALÓN
ABATIBLE + FIJO
PERSIANA